



ALASKA CONCRETE SOLUTIONS



ALASKA'S LARGEST & MOST CAPABLE FLEET

Including standby capability, Alaska's ONLY detachable pump unit for multi-story buildings, ONLY telescopic conveyor trucks + the 3 largest boom trucks in the state.



ACPA CERTIFIED TEAM



48-HOUR GUARANTEED SERVICE



2 YARD LOCATIONS TO SERVE YOU



SEE IT IN ACTION
concreteAK.com

INTRODUCING ALASKA CONCRETE SOLUTIONS'

LB-33 SCHWING TELESCOPIC LOOP BELT CONVEYOR

DELIVERING DUAL CONCRETE & BACKFILL PLACEMENTS WHERE OTHERS CAN'T

HIGH CAPACITY, MULTI-USE

Move more material faster & more precisely with:

- 107' Horizontal Reach
- Up to 504 cu Yds/Hr (based on material)
- Up to 61' Vertical Reach
- Up to 6" Aggregate

COST-SAVING SPEED

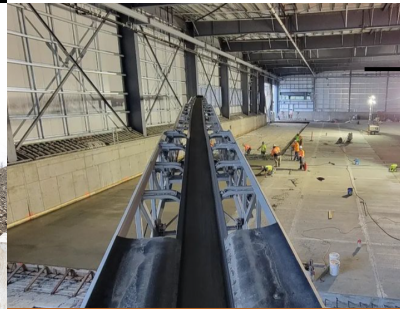
Save time + labor with high-capacity material placement and compaction occurring as layers are placed. Increased placement speeds, fast set-up times and less machinery needed on site make the loop belt an economical solution.

OUTMANEUVER + OUTPERFORM ON ANY JOB SITE

With 360° rotation and a low 17' clearance we can load and place a wide range of aggregate material in nearly any position or location. This allows work on a broader range of high-volume concrete or backfill applications, from footings and foundations to bridge decks and tower foundations.

PRECISION, SPEED + RELIABILITY

The loop belt conveyor is an excellent material placement solution for high-capacity, zero-slump, low-clearance and difficult-to-place applications where precision, speed & reliability are a priority.



OUR STRENGTH IS CONCRETE
#CONCRETESTRONG

@alaskaconcretesolutions



(907) 406-4545 office
(907) 357-6833 direct
concreteAK.com